

**Nokia Customer Care
6255/6255i/6256/6256i (RM-19)
Mobile Terminal**

Reassembly

This page intentionally left blank.

Before You Begin

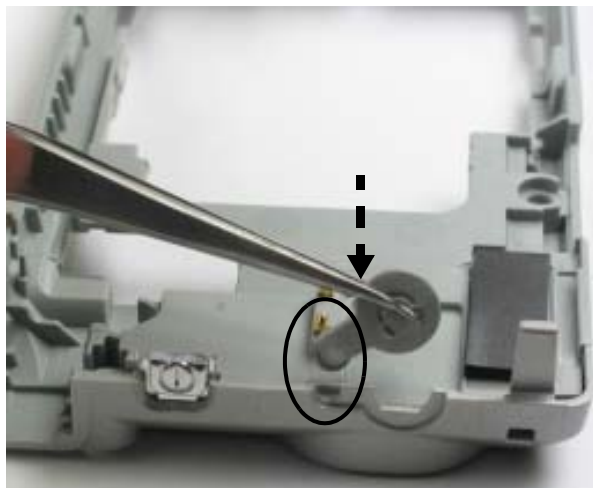
You need the following equipment to reassemble the 6255/6255i/6256/6256i:

- ESD protection = Always follow ESD protection guidelines when disassembling and assembling the mobile terminals. To avoid potential ESD damage, the recommendation is to treat all assemblies and components as if they are sensitive to ESD.
- SRT-6 opening tool
- Screwdriver
- Tweezers

Reassembly Instructions

1. Attach the Rubber Grommet

Insert the rubber grommet in the D-cover using the slot for the small end of the grommet.



2. Insert the D-cover Card Trap

- a. Insert the guide pin into the slot of the D-cover.

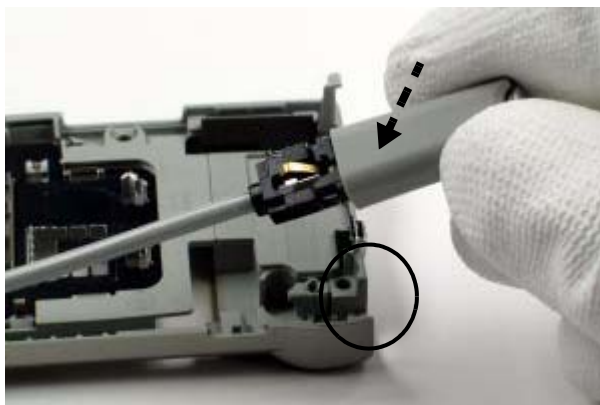


- b. After inserting the bottom pin, snap the upper guide pin into the D-cover slot.

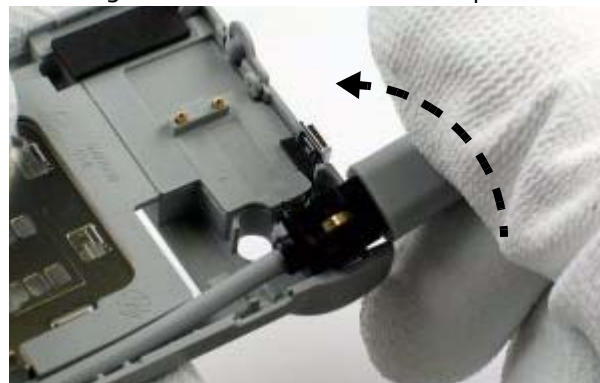


3. Attach the Whip Antenna

- a. Insert the whip antenna into the D-cover using the notch that is circled below.



- b. Twist the antenna stub clockwise to snap it into the D-cover. Be sure not to grip or damage the connectors on the whip antenna.



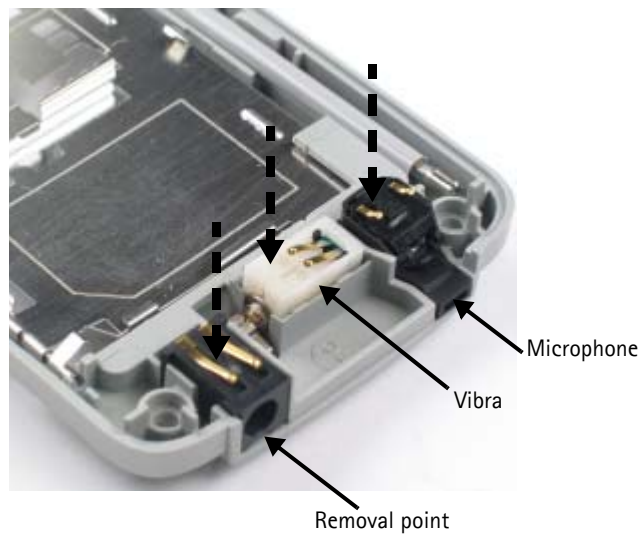
4. Insert the IR Window

Use your fingers to insert the IR window into the notch in the D-cover.



5. Insert the DC Jack, Vibra Motor, and Microphone

Use tweezers to insert the DC jack, vibra motor, and microphone into the D-cover. Ensure that you do not touch the electrical connectors on the top of each part.



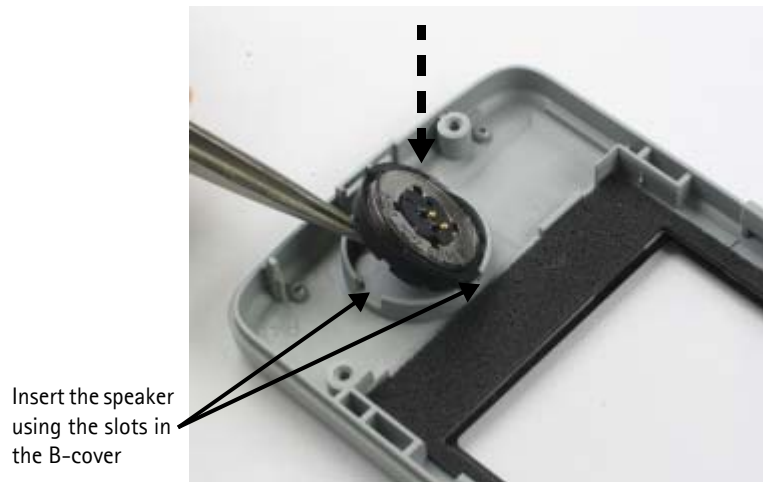
6. Insert the Hinge

Use a screwdriver to push the hinge into the hinge assembly of the D-cover.



7. Insert the Speaker

Insert the speaker (with rubber gasket) by using the guide slots in the B-cover.

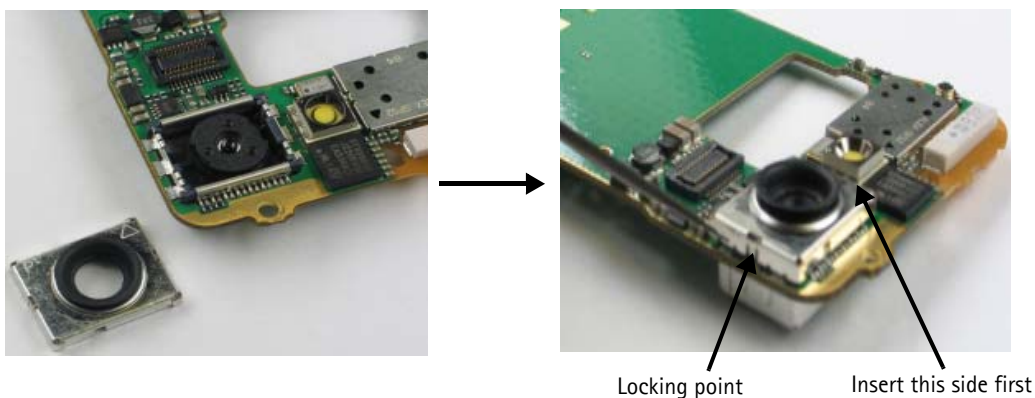


8. Place the Secondary LCD Display into the B-cover



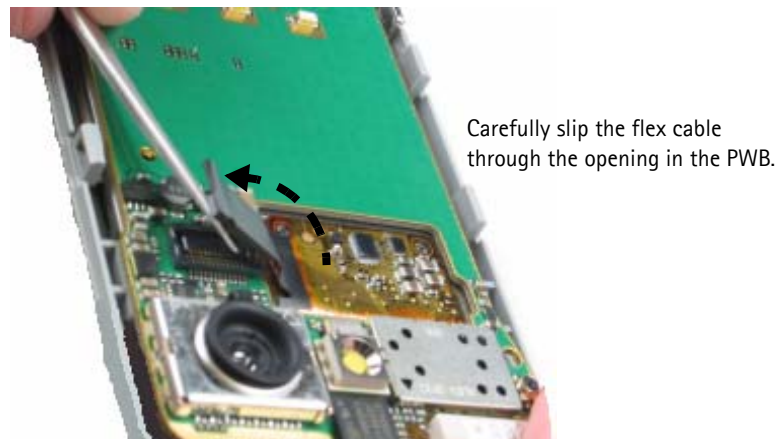
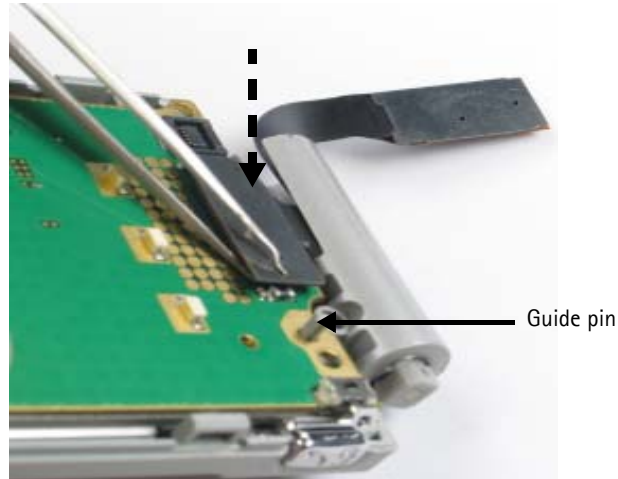
9. Attach the Camera Lid

Attach the camera lid to the PWB assembly by connecting the inside edge of the cover. Press down on the outside edge to click the locking point into place.



10. Attach the UI PWB to the B-cover

- a. Attach the UI PWB to the B-cover using the guide pins. Carefully slip the flex cable through the opening in the PWB, and attach both LCD flex cables. Be careful not to scrape the PWB with the tweezers.



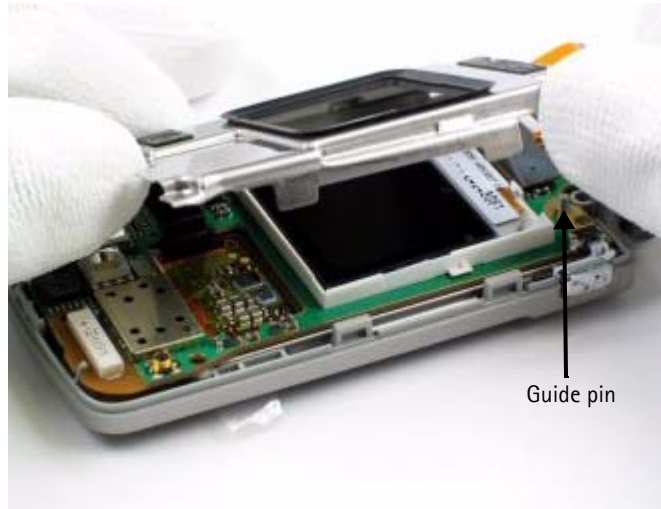
11. Attach the Secondary LCD Display

Place the secondary LCD display on the PWB, and carefully attach the LCD connector flex pad.



12. Attach the Inner Housing to the B-cover

Use the guide pins and screw holes to attach the inner housing to the PWB.



13. Add the Four Screws to the A-cover



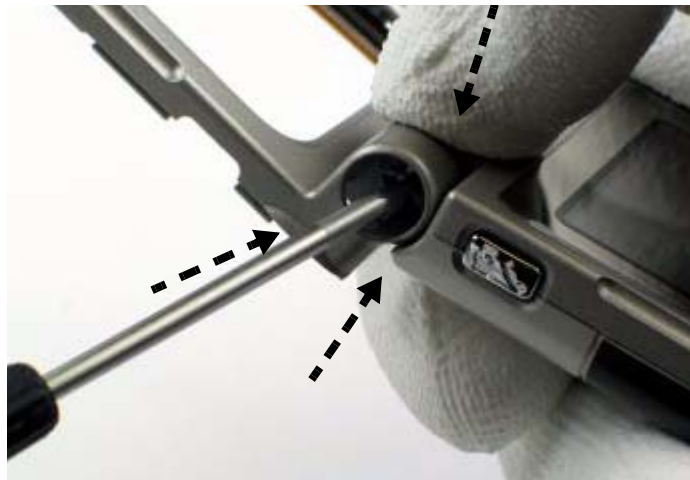
14. Connect the B-cover and C-cover

With the mobile terminal in the open position:

- a. Insert the flex cable into the hinge assembly slot of the C-cover.
- b. Connect the assembly side without the hinge first.



- c. While applying pressure on the hinge with the screwdriver, apply opposing pressure to the middle of the B/C-cover assembly to snap the hinge into place.



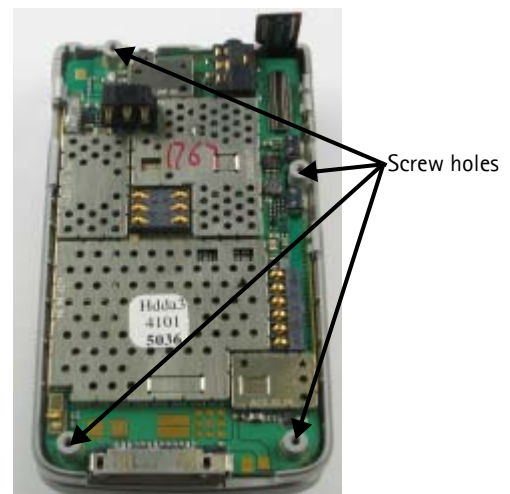
15. Attach the Hinge Cap

Align the hinge cap with the rivets on the inside of the hinge assembly, and press the hinge cap into place.



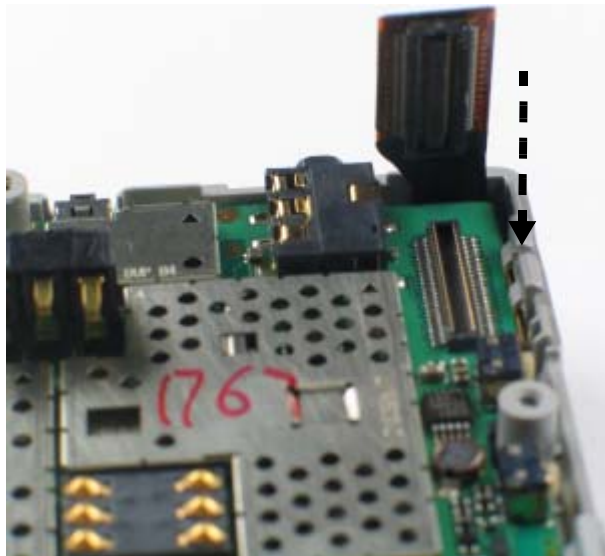
16. Assemble the PWB Engine and the C-cover

Insert the PWB by aligning it using the screw holes and C-cover clasp.



17. Attach the Flex Cable

Carefully lock the flex cable onto PWB.

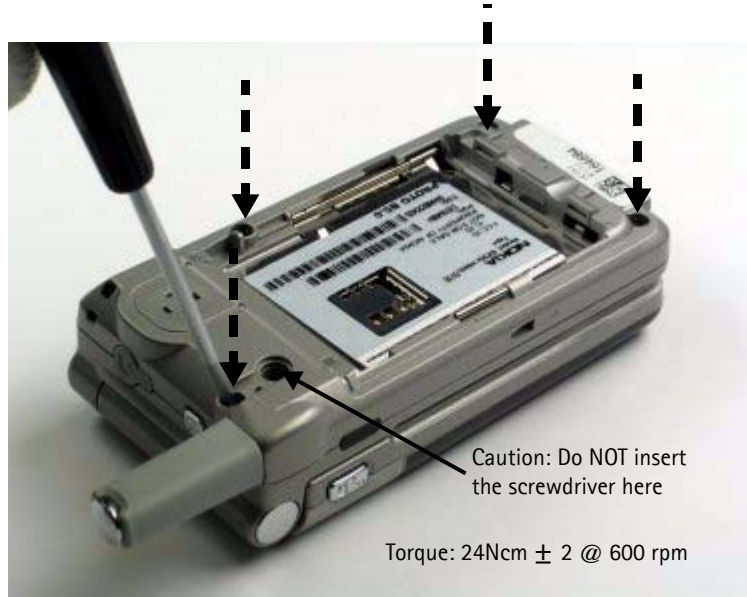
**18. Assemble the D-cover and C-cover**

Align the screw holes and combine the D-cover and C-cover. Be careful of the guide latch on the D-cover.



19. Add the Screws

Add four screws as indicated below. Use torque driver set to $24\text{Ncm} \pm 2 @ 600 \text{ rpm}$.



20. Attach the Screw Grommet

Use tweezers to attach the rubber screw grommet.



21. Attach the A-cover

Starting with one side, attach the A-cover using the four locking locations and the screw hole (not shown). Press firmly until you hear and feel the A-cover click into place.



22. Add the B-cover Base Screw and Co-label

- a. Open the mobile terminal, and add the single screw at the base of the B-cover.



- b. Attach the co-label to the base of the B-cover.

23. Insert the Battery and Attach the Battery Cover (E-cover)

- a. Insert the battery.
- b. Align E-cover tabs with the slots, and slide it towards the top while pressing down until you feel it click into place.

